

BALTIMORE COMMUNITY FOUNDATION

WHO WE ARE

The Baltimore Community Foundation is a philanthropic foundation created by and for the people of Greater Baltimore, where many donors join together to make the region they love a better place, today and for future generations.

OUR GOALS

Build a civic endowment, a permanent source of philanthropic funding for the greater Baltimore region,

Help donors plan and carry out their charitable giving in Baltimore, the region, and across the country,

Work in partnership with other foundations, public agencies and the business sector, bringing a consistent voice of leadership to critical civic issues.

OUR INVESTMENT IN NEIGHBORHOODS

BCF invests in the livability of neighborhoods because they are at the core of Baltimore's economic vitality and civic health.

We aim to help communities become and remain safe, clean, green and vibrant, and to develop leaders who can advocate for their neighborhoods.

GRANTMAKING STRATEGIES IN NEIGHBORHOODS

Neighborhood Grants Program

Strategic Initiatives

Target Neighborhoods

NEIGHBORHOOD GRANTS PROGRAM

Community Engagement
Resident Leadership Development
Community Arts



INITIATIVES

- **Neighborhood Sustainability Initiative** serves as an umbrella for projects supporting the goals of Baltimore City's Sustainability Plan.
- **Healthy Neighborhoods, Inc.** helps strong but undervalued Baltimore neighborhoods increase home values, market their communities, create high standards for property improvements, and forge strong connections among neighbors.
- **Central Maryland Transportation Alliance**, a coalition of Greater Baltimore's business, environmental and community leaders dedicated to improving travel efficiency in Central Maryland.



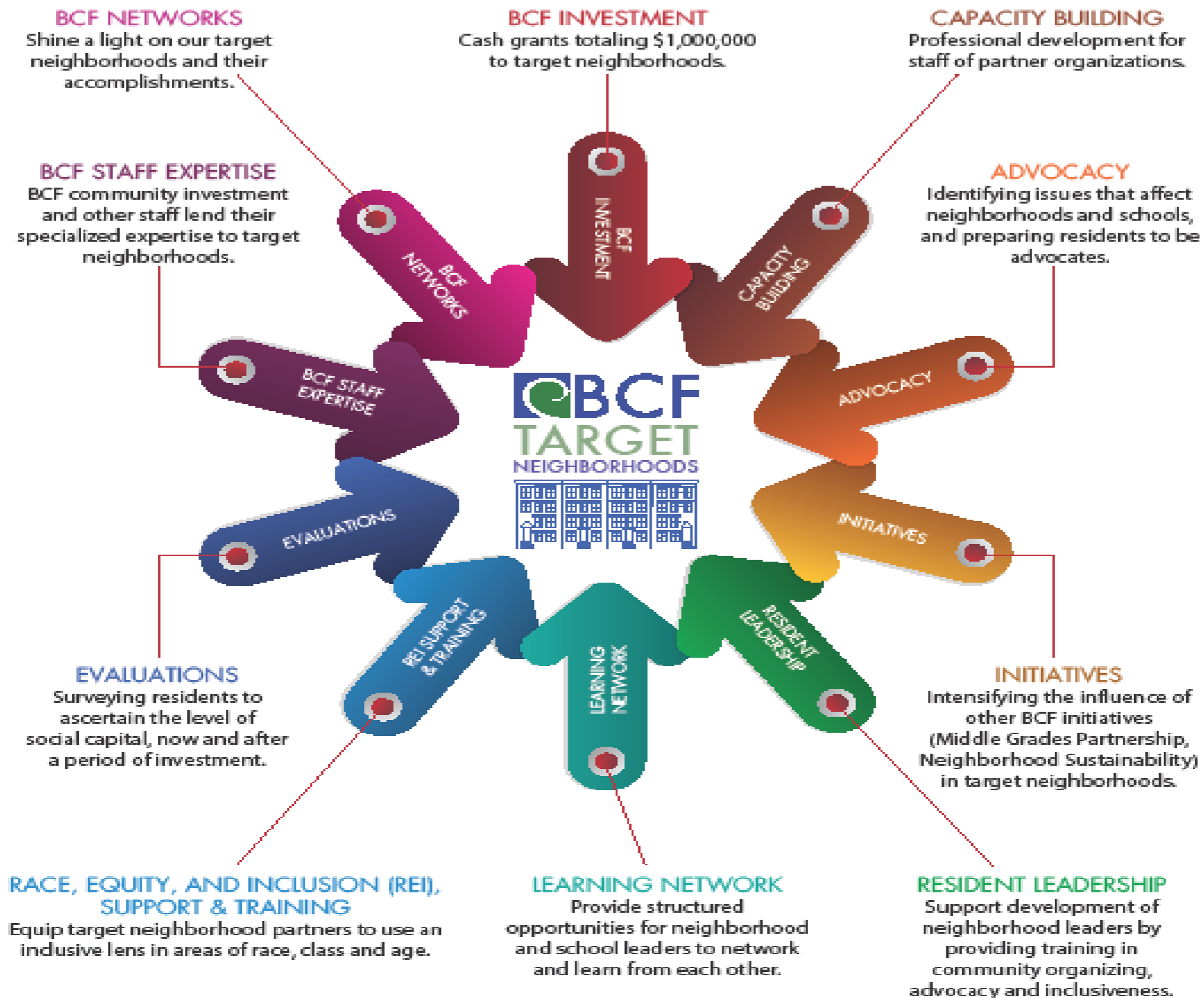
KINGS UNIVERSITY

Don't make excuses. Make a difference.
www.epa.gov/recycle

TARGET NEIGHBORHOODS

Long term, strategic investment
within a targeted area.

We are investing over \$1 Million in our TWO TARGET NEIGHBORHOODS



BEYOND GRANTMAKING

We Invest in PEOPLE

Their Ideas and Their Solutions

- ▶ Capacity Building
- ▶ Leadership Development
- ▶ Community Engagement & Partnerships
- ▶ Convener
- ▶ Evaluation & Data Gathering

CAPACITY BUILDING

- Fund Operating Support
- Fund Community Organizers
- Board Trainings
- Staff Trainings
- Racial Equity and Inclusion Training



LEADERSHIP DEVELOPMENT

- Board Trainings
- Learning Network
- Resident Leadership Training
- Community Partner Leadership Trainings



COMMUNITY ENGAGEMENT & PARTNERSHIPS

- ❑ Inclusive decision making process (race, age, class, etc.)
- ❑ Partnership between community associations, institutions and residents
- ❑ Engage volunteers
- ❑ Youth & Older Adult Engagement



CONVENER

BCF uses it's influence to play the role of convener.

We convene:

- Grantees/Nonprofits
- Grantees & Donors
- City Officials & Grantees
- Community Partners
- Funding Community

HOW WE ARE MEASURING THESE OUTCOMES?

- Evaluation
 - Surveying
 - Focus Groups
- Final Reports

Measuring our impact in Baltimore's neighborhoods

In our work to strengthen Baltimore's neighborhoods, we've strategically chosen two places to target our funding: Greater Highlandtown and Reservoir Hill. We're making a million-dollar investment in these neighborhoods, and with this big investment comes big expectations. To be sure we are being as effective as we can with the resources we have, BCF is engaged in a rigorous evaluation of our work— looking for positive changes in social capital, cleanliness, greening, safety, vibrancy and more.

Along with our strategic and nonprofit partners we're collecting and analyzing four types of data:



Qualitative

With the University of Maryland School of Social Work we're conducting surveys and focus groups of neighborhood residents.

- ▶ Do you trust your neighbors?
- ▶ Do you walk through your neighborhood at night?

Quantitative

With the University of Baltimore Neighborhood Indicators Alliance Jacob Frances Institute we're collecting neighborhood vital sign indicators.

- ▶ How many 311 calls are made each month?
- ▶ How many groceries stores are there?

Grant Report

Grantees in each of the target neighborhoods that have received funding from BCF self-report on the progress of their projects and programs.

- ▶ How many people attended the event BCF funded?
- ▶ How many trees did you plant with your BCF grant?

Stories

We ask residents to tell us about how they experience where they live.

- ▶ Why do you love your neighborhood?
- ▶ How do you get involved in your neighborhood?

The collection and study of this data will help BCF determine next steps in our strategy and ways to make improvements, for us and for our nonprofit partners. As new information comes in, we'll adjust to refine our approach and help our nonprofits make their efforts stronger, to ensure our big investments get the big results Baltimore neighborhoods deserve.

Learn more about BCF's work in neighborhoods by visiting www.bcf.org/neighborhoods.

RACE, EQUITY AND INCLUSION

- ▶ Our region is stronger, better, and more prosperous when all residents have equal opportunities to participate in civic life. We recognize the disparities experienced by people of color and other communities in accessing those opportunities, and we seek to redress those disparities.
- ▶ By being intentional and strategic about diversity, equity, and inclusion, BCF will be a more informed, innovative, and effective community investor and will increase progress toward our vision of a Baltimore with a growing economy, where all have the opportunity to thrive.

▶ Thank You!

- ▶ Dion Cartwright
- ▶ dcartwright@bcf.org
- ▶ 410-332-4172 ext. 144
- ▶ www.bcf.org